



4 DRUM SPILL PALLET - SJ-100-007



SPILL CONTAINMENT

SPILL TRAYS	08
DRUM SPILL PALLETS	10
DRUM FUNNEL & TRAY	12
DRUM RACK DISPENSING STATION	13
DRUM TROLLEY	14
DRUM SPILL PALLET HARDCOVER	15
SPILL WORKFLOORS	16
IBC SPILL PALLETS	18
ON-BOARD SPILL CONTAINMENT	20
ACCESSORIES	22
PALLETISATION	62

SPILL TRAYS



A range of spill containment trays available in 20, 30, 40, 60 & 100 litre capacities in a variety of platform colours • Ideal for storing small containers of chemicals in laboratories, workshops, stores, universities, schools, garages, farms etc. • Platform with hand inserts and viewing gaps for inspections and / or pump insertion • Slip resistant platform surface • Can be used with or without platform • The unique nestable design saves storage space and optimises handling and delivery • Easy to clean • All trays black as standard • For our **DIBt (Ü)** range see page 78.

ST1-100-YE/GR/BK-BK: May be used to store a single 205 litre drum as its capacity exceeds 25% of the volume, in compliance with current UK regulations. For more information see page 74.



ST1-20-YE-BK & ST1-30-YE-BK



ST1-20-GR-BK



ST1-40-BK-BK



ST1-20-YE-BK ● ST1-20-GR-BK ●
ST1-20-BK-BK ●



ST1-60-B-BK



ST1-100-YE-BK

H x W x D (mm):	155 x 600 x 400
Platform (mm):	25 x 590 x 390
Weight (kg):	3
Capacity (ℓ):	20
Max load (kg):	50



ST1-20-B-BK ●

H x W x D (mm): 155 x 600 x 400
 Platform (mm): N/A
 Weight (kg): 2
 Capacity (ℓ): 28
 Max load (kg): N/A



ST1-30-YE-BK ● ST1-30-GR-BK ●
 ST1-30-BK-BK ●

H x W x D (mm): 155 x 805 x 405
 Platform (mm): 25 x 795 x 395
 Weight (kg): 4.5
 Capacity (ℓ): 30
 Max load (kg): 50



ST1-30-B-BK ●

H x W x D (mm): 155 x 805 x 405
 Platform (mm): N/A
 Weight (kg): 3
 Capacity (ℓ): 39
 Max load (kg): N/A



ST1-40-YE-BK ● ST1-40-GR-BK ●
 ST1-40-BK-BK ●

H x W x D (mm): 155 x 800 x 600
 Platform (mm): 40 x 790 x 590
 Weight (kg): 6.5
 Capacity (ℓ): 40
 Max load (kg): 100



ST1-40-B-BK ●

H x W x D (mm): 155 x 800 x 600
 Platform (mm): N/A
 Weight (kg): 3.5
 Capacity (ℓ): 60
 Max load (kg): N/A



ST1-60-YE-BK ● ST1-60-GR-BK ●
 ST1-60-BK-BK ●

H x W x D (mm): 175 x 1000 x 600
 Platform (mm): 40 x 990 x 590
 Weight (kg): 9
 Capacity (ℓ): 60
 Max load (kg): 200



ST1-60-B-BK ●

H x W x D (mm): 175 x 1000 x 600
 Platform (mm): N/A
 Weight (kg): 5
 Capacity (ℓ): 87
 Max load (kg): N/A



ST1-100-YE-BK ● ST1-100-GR-BK ●
 ST1-100-BK-BK ●

H x W x D (mm): 175 x 1200 x 800
 Platform (mm): 40 x 1190 x 790
 Weight (kg): 14
 Capacity (ℓ): 100
 Max load (kg): 210



ST1-100-B-BK ●

H x W x D (mm): 175 x 1200 x 800
 Platform (mm): N/A
 Weight (kg): 6.5
 Capacity (ℓ): 143
 Max load (kg): N/A

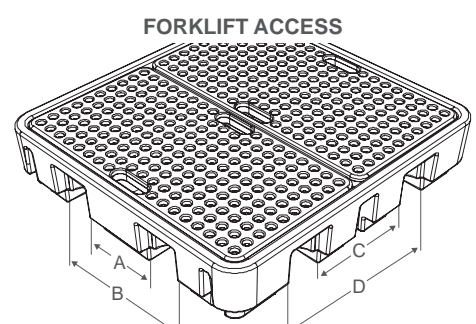
DRUM SPILL PALLETS

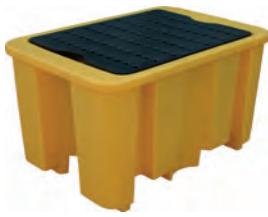
A range of spill containment pallets for 1, 2 and 4 drums with capacities from 230 to 485 litres • Ideal for static spill containment in factories, warehouses, farm stores, garages etc. • Durable, removable platform • Tested for weight and hydrostatic loads • Capacities meet / exceed European, UK and US regulations • Platform with hand inserts and viewing gaps for inspections and / or pump insertion • Compatible with most forklifts and pallet trucks (fork extensions may be needed) • Remove drums / containers and empty spill pallet before moving • All platforms black as standard • For optional extras and accessories see pages 22-23 • For our **DIBt (Ü)** range see page 78.

SJ-100-025: Heavy-duty spill pallet (36.5 kg) for substantial loads • Designed to take uniformly distributed load of 2000 kg • Blue as standard • Minimum order quantity: 20 pieces.

SJ-2E: EuroSump is a nestable spill pallet that fits **SJ-2E-PLAT** or a Euro-pallet (1200 x 800 mm) • It is the user's responsibility to ensure that any wooden or plastic pallets used with the **EuroSump** are sufficiently strong and free from structural defects.

SJ-110: The unique nestable design saves storage space and optimises handling and delivery • Generous surface area (1.8 m²).





SJ-100-050 ● SJ-100-051 ●

H x W x D (mm):	600 x 1000 x 680
Platform (mm):	40 x 780 x 580
Weight (kg):	19.5
Capacity (ℓ):	230
A / B (mm):	200 / 690
C / D (mm):	N/A
Max load (kg):	400
205 ℓ drums:	1



SJ-100-001 ● SJ-100-002 ●

H x W x D (mm):	440 x 1300 x 750
Platform (mm):	55 x 1180 x 630
Weight (kg):	20.5
Capacity (ℓ):	250
A / B (mm):	190 / 815
C / D (mm):	N/A
Max load (kg):	650
205 ℓ drums:	2



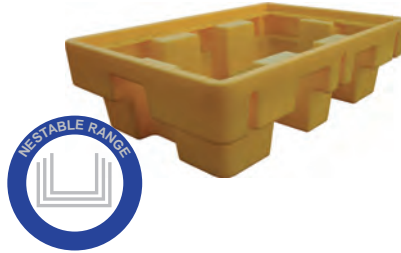
SJ-100-025 ●

H x W x D (mm):	440 x 1300 x 750
Platform (mm):	55 x 1180 x 630
Weight (kg):	36.5
Capacity (ℓ):	250
A / B (mm):	190 / 815
C / D (mm):	N/A
Max load (kg):	2000
205 ℓ drums:	2



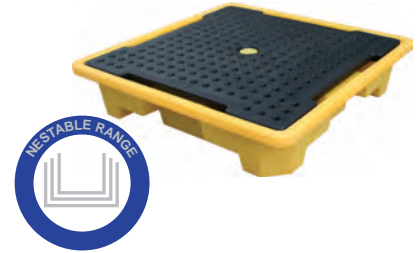
SJ-2E-PLAT ●

H x W x D (mm):	45 x 1215 x 815
Weight (kg):	8
205 ℓ drums:	2



SJ-2E-BLK ● SJ-2E-COYE ●

H x W x D (mm):	380 x 1310 x 910
Platform (mm):	N/A
Weight (kg):	16
Capacity (ℓ):	230
A / B (mm):	170 / 615
C / D (mm):	760 / 865
Max load (kg):	650
205 ℓ drums:	2



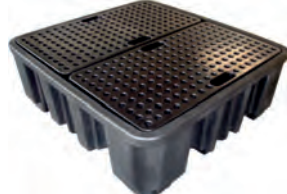
SJ-110-006 ● SJ-110-007 ●

H x W x D (mm):	305 x 1460 x 1460
Platform (mm):	50 x 1340 x 1340
Weight (kg):	37
Capacity (ℓ):	249
A / B (mm):	400 / 840
C / D (mm):	400 / 840
Max load (kg):	1250
205 ℓ drums:	4



SJ-100-006 ● SJ-100-007 ●

H x W x D (mm):	280 x 1380 x 1290
Platform (mm):	55 x 1180 x 630 (2)
Weight (kg):	31
Capacity (ℓ):	250
A / B (mm):	270 / 710
C / D (mm):	400 / 840
Max load (kg):	1250
205 ℓ drums:	4



SJ-100-010 ● SJ-100-011 ●

H x W x D (mm):	480 x 1380 x 1290
Platform (mm):	55 x 1180 x 630 (2)
Weight (kg):	41
Capacity (ℓ):	485
A / B (mm):	205 / 805
C / D (mm):	205 / 805
Max load (kg):	1250
205 ℓ drums:	4



SJ-100-060 ● SJ-100-061 ●

H x W x D (mm):	270 x 2445 x 660
Platform (mm):	40 x 780 x 580 (3)
Weight (kg):	34
Capacity (ℓ):	235
A / B (mm):	190 / 690
C / D (mm):	N/A
Max load (kg):	1250
205 ℓ drums:	4

DRUM FUNNEL & TRAY

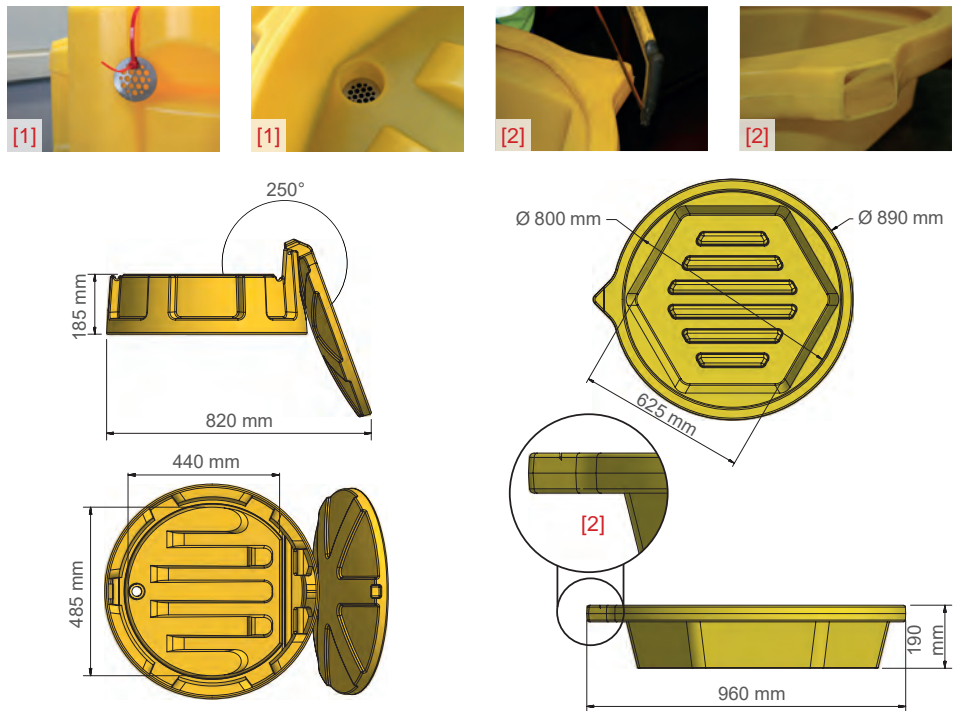
The **DrumKlam** range not only makes pouring easier, it also offers affordable protection from drips, leaks and spills • Compatible with a standard 205 litre drum • Raised ribs allow parts / drums to stand above drained liquids.

SJ-600: Drum funnel with hinged lid prevents filling with rainwater & debris when not in use • Supplied with a stainless steel debris filter^[1] • 250° lid opening allowing full access to drainage bowl • With or without plastic toggle latch.

SJ-610: Drum tray • The unique nestable design saves storage space and optimises handling and delivery • Spout facility for dispensing drained liquids^[2].



SJ-600-001/P & SJ-610-001



SJ-600-001 ●

Height (mm): 265
 Diameter (mm): 620
 Weight (kg): 3.8
 Capacity (ℓ): N/A
 Plastic toggle: x



SJ-600-001/P ●

Height (mm): 265
 Diameter (mm): 620
 Weight (kg): 3.8
 Capacity (ℓ): N/A
 Plastic toggle: ✓



SJ-610-001 ● SJ-610-002 ●

Weight (kg): 5
 Capacity (ℓ): 86* / 54**

*Top of bowl
 **Underside of spout

DRUM RACK DISPENSING STATION

The drum rack dispensing station offers a spill containment capacity of 450 litres with an optional second stacking level to accommodate up to 4 drums in total • Compatible with standard 205 litre drums • Ideal for easy dispensing and storage • Drum rack to be used with drum rack base only • Compatible with most forklifts and pallet trucks (fork extensions may be needed) • Remove drums before forklifting • For our **DIBt (Ü)** range see page 78.



SJ-200-002 & SJ-200-003



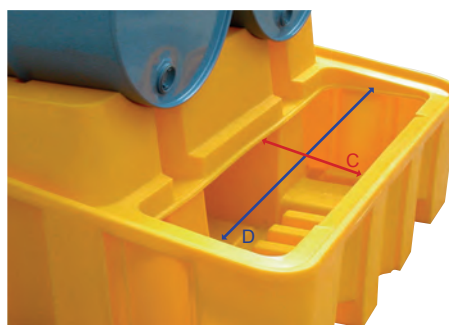
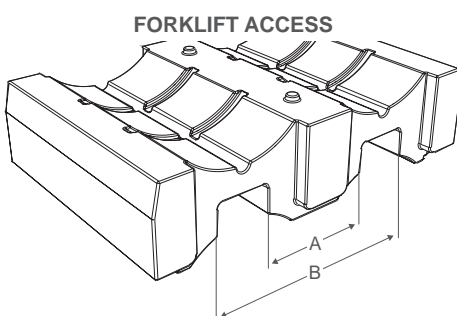
SJ-200-001 ● SJ-200-002 ●

H x W x D (mm):	390 x 1375 x 940
Weight (kg):	25
Capacity (ℓ):	N/A
A / B (mm):	430 / 840
C x D (mm):	N/A
Max load (kg):	1000
205 ℓ drums:	2



SJ-200-003 ● SJ-200-004 ●

H x W x D (mm):	635 x 1375 x 1350
Weight (kg):	46
Capacity (ℓ):	450
A / B (mm):	430 / 840
C x D (mm):	345 x 1185
Max load (kg):	1000
205 ℓ drums:	2



DRUM TROLLEY

DrumKart is a mobile dispensing unit with an integral 250 litre sump • Compatible with a standard 205 litre drum • Easy to handle • Easy to clean, liquid drains to the front • Rubber wheels as standard • Barrel secured with ratchet strap • Large ribbed dispensing area, ideal for containers to sit above minor spills • Spill capacity of 3 litres when vertical^[1] • Castors with rotation and swivel brake • The safety support locks into place for easy vertical loading and storage • Two foot recesses positioned for easy tipping and handling.



SJ-400-001



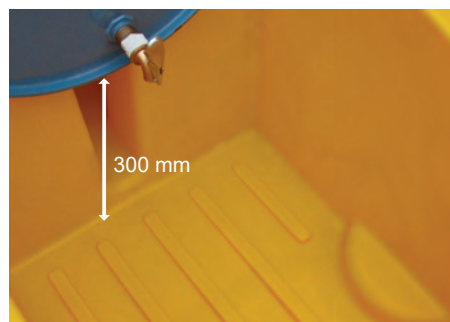
SJ-400-001



SJ-400-001



[1]



300 mm



SJ-400-001 ● SJ-400-003 ●

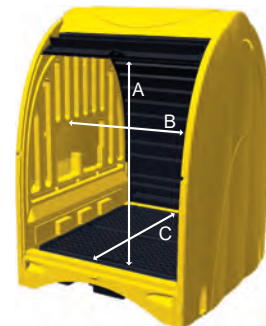
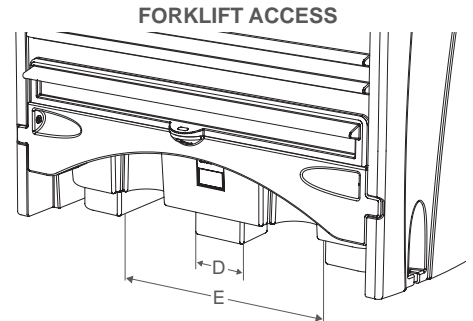
H x W x D (mm):	680 x 1740 x 815
Weight (kg):	41
Capacity (ℓ):	250
Max load (kg):	300
205 ℓ drums:	1



SJ-400-003

DRUM SPILL PALLET HARDCOVER

SpillShak, a range of 2 and 4 drum spill pallets with hardcover - Rigid and double walled to provide weathertight storage • Tall headspace easily accommodates rotary pump equipment and conical funnels • Access to both sides via two sliding shutters • Compatible with most forklifts and pallet trucks (fork extensions may be needed) • Remove drums / containers and empty spill pallet before moving • Supplied with a stainless steel fixing kit as standard • Easy assembly • Can be bolted to the ground • Two side panels with 2 storage compartments each (2 compartment covers supplied as standard) • Can be padlocked (padlock not supplied) • All shutters black as standard • For optional extras and accessories see pages 22-23 • Available with **DIBt** approved spill pallets • For our **DIBt (Ü)** range see page 78 • **SJC2**: Delivered assembled • **SJC4 & SJC45**: Delivered flat packed.



SJC2-YE-BK-B-A ●



SJC4-YE-BK-B-F ●



SJC45-YE-BK-B-F ●

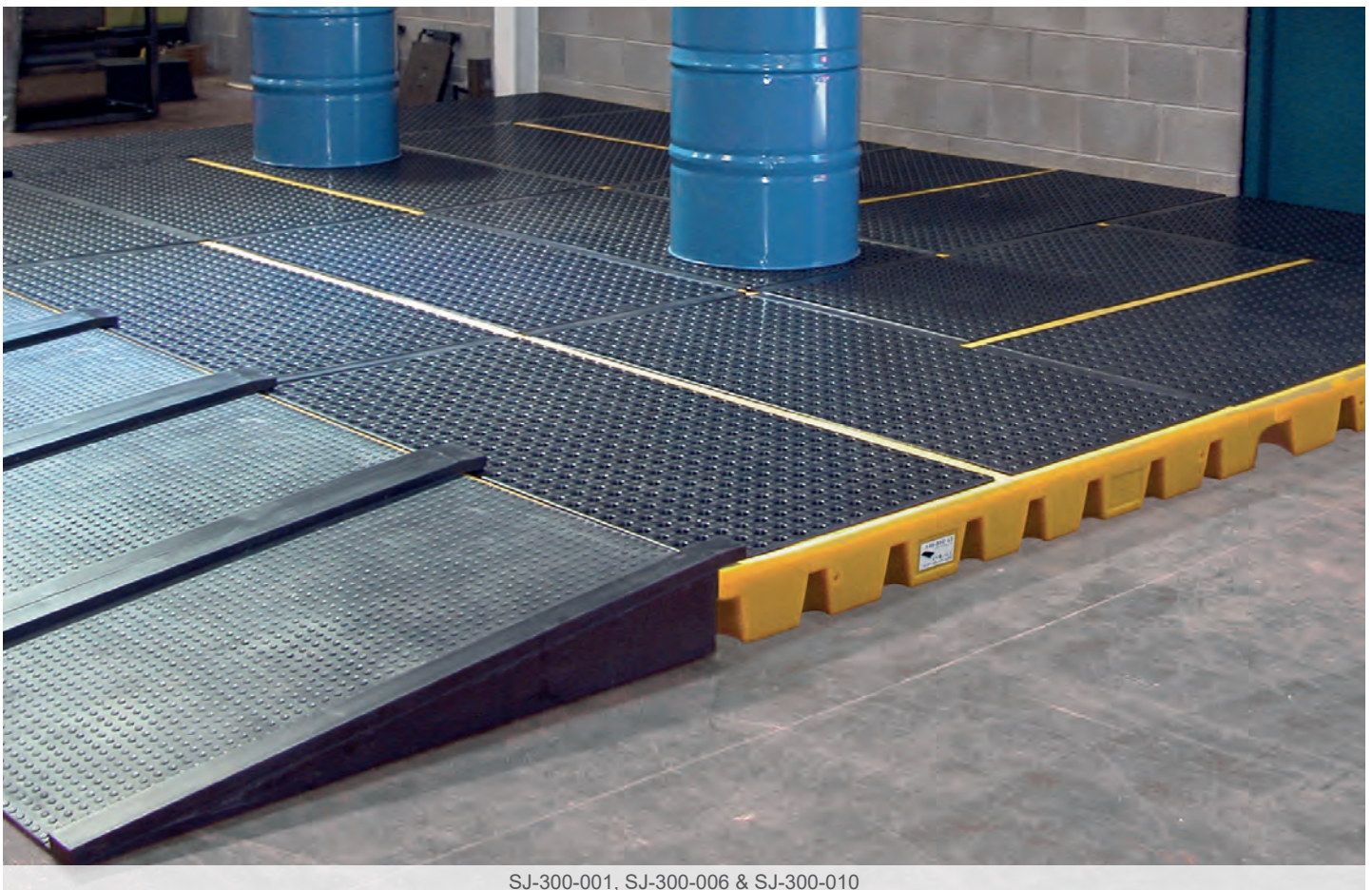
H x W x D (mm):	2110 x 1565 x 995
A x B x C (mm):	1350 x 1240 x 800
Spill Pallet:	SJ-100-001 ●
Platform (mm):	55 x 1180 x 630
Weight (kg):	101.5
Capacity (ℓ):	250
D / E (mm):	190 / 815
205 ℓ drums:	2

H x W x D (mm):	2110 x 1565 x 1620
A x B x C (mm):	1510 x 1210 x 1440
Spill Pallet:	SJ-100-007 ●
Platform (mm):	55 x 1180 x 630 (2)
Weight (kg):	148
Capacity (ℓ):	250
D / E (mm):	270 / 710
205 ℓ drums:	4

H x W x D (mm):	2110 x 1565 x 1620
A x B x C (mm):	1310 x 1210 x 1440
Spill Pallet:	SJ-100-010 ●
Platform (mm):	55 x 1180 x 630 (2)
Weight (kg):	158
Capacity (ℓ):	485
D / E (mm):	205 / 805
205 ℓ drums:	4

SPILL WORKFLOORS

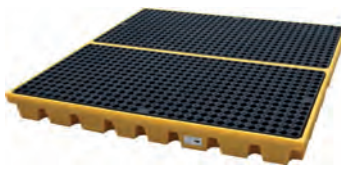
The flexible workflow system is the ideal solution for liquid storage and dispensing areas where frequent access to containers is required • Large (1600 x 1600 mm) and small (800 x 1600 mm) workflow units and ramps can be combined and connected in different ways to suit the application • Large unit complies with UK European spill pallet regulations • Units can be joined together with workflow connectors, **WIN-A272**, **WIN-A728** & **KIT102**, to expand the workflow area • Access ramp locks onto workflow with integrated locating pins • Robust and extremely stable • Strong, removable polyethylene platform • Slip resistant texture • All platforms black as standard • For optional extras and accessories see pages 22-23 • For our **DIBt (Ü)** range see page 78.





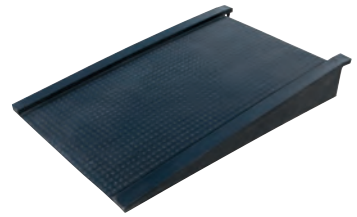
SJ-300-001 ● SJ-300-002 ●

H x W x D (mm): 150 x 1600 x 800
 Platform (mm): 60 x 1555 x 755
 Weight (kg): 24.5
 Capacity (ℓ): 112
 Max load (kg): 1000
 205 ℓ drums: 2



SJ-300-006 ● SJ-300-007 ●

H x W x D (mm): 150 x 1600 x 1600
 Platform (mm): 60 x 1555 x 755 (2)
 Weight (kg): 45
 Capacity (ℓ): 232
 Max load (kg): 2000
 205 ℓ drums: 4



SJ-300-010 ●

H x W x D (mm): 180 x 810 x 1290
 Weight (kg): 15
 Max load (kg): 500



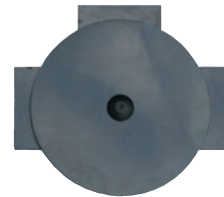
WIN-A727 ●

H x W x D (mm): 40 x 1500 x 40



WIN-A728 ●

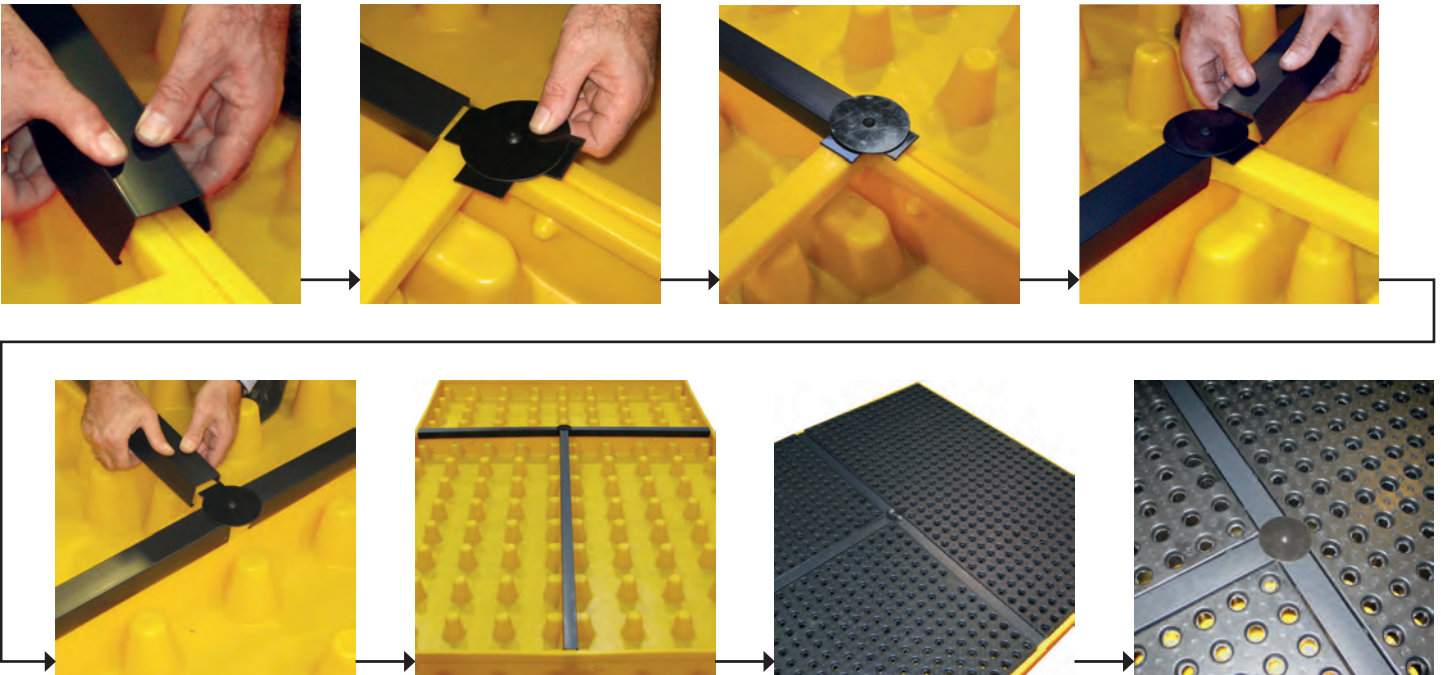
H x W x D (mm): 40 x 700 x 40



KIT102 ●

W x D (mm): 150 x 125
 Diameter (mm): 140

CONNECTOR KIT STEP BY STEP



IBC SPILL PALLETS

Efficient secondary spill containment solution for 1 or 2 IBCs • Available with or without platforms and dispensing stations • Central support always to be used when platform is in place • Tested for weight and hydrostatic loads • Compatible with most forklifts and pallet trucks (fork extensions may be needed) • Platform with hand inserts and viewing gaps for inspections and / or pump insertion • Remove IBC and empty spill pallet before moving • Capacities meet / exceed European, UK and US regulations • IBCs must always be facing forward, not to the side, when using a double spill pallet^[1] • All platforms black as standard • All central supports red as standard • For optional extras and accessories see pages 22-23 • For our **DIBt (Ü)** range see page 78.

SJ-510 & SJ-520: The unique nestable design saves storage space and optimises handling and delivery.

SJ-510: Generous surface area (2.5 m²).

SJ-500-005/006 & SJ-525: Can be used with or without platform.

SJ-545 PLATFORMLESS SPILL PALLET: Low height for ease of use (575 mm) • Compatible with pallet stacker trucks, not compatible with pallet trucks • 32 mm drop onto support surface.

SJ-525: Integrated dispensing area with a raised 10 litre mini sump.

SJ-510-095 & SJ-520-095: Only for use in bunded areas.



SJ-520-001



SJ-510-001 & SJ-510-003



SJ-500-001 & SJ-500-007



SJ-545-YE & SJ-500-008 (2)



IBCs FACING FORWARD



IBCs FACING TO THE SIDE

SJ-500-001 ● SJ-500-002 ●

SJ-500-005 ● SJ-500-006 ●

H x W x D (mm):	1000 x 1450 x 1450
Platform (mm):	50 x 1340 x 1340
Weight (kg):	95
Capacity (ℓ):	1120
A / B (mm):	160 / 665
C / D (mm):	N/A
Max load (kg):	2000
IBC:	1

H x W x D (mm):	1000 x 1450 x 1450
Platform (mm):	N/A
Weight (kg):	74
Capacity (ℓ):	1120
A / B (mm):	160 / 665
C / D (mm):	N/A
Max load (kg):	2000
IBC:	1



SJ-510-001 ● SJ-510-002 ●

H x W x D (mm):	700 x 1680 x 1680
Platform (mm):	90 x 1585 x 1585
Weight (kg):	86
Capacity (ℓ):	1260
A / B (mm):	180 / 710
C / D (mm):	180 / 710
Max load (kg):	2500
IBC:	1



SJ-510-095 ●

H x W x D (mm):	695 x 1585 x 1585
Platform (mm):	90 x 1585 x 1585
Weight (kg):	53
Capacity (ℓ):	N/A
A / B (mm):	120 / 785
C / D (mm):	120 / 785
Max load (kg):	2500
IBC:	1



SJ-525-BK-YE ● SJ-525-BK-BK ●

H x W x D (mm):	750 x 2000 x 1490
Platform (mm):	50 x 1335 x 1335
Weight (kg):	112
Capacity (ℓ):	1120
A / B (mm):	230 / 670
C / D (mm):	N/A
Max load (kg):	2000
IBC:	1



SJ-525-B-YE ● SJ-525-B-BK ●

H x W x D (mm):	750 x 2000 x 1490
Platform (mm):	N/A
Weight (kg):	91
Capacity (ℓ):	1120
A / B (mm):	230 / 670
C / D (mm):	N/A
Max load (kg):	2000
IBC:	1



SJ-500-003 ● SJ-500-004 ●

H x W x D (mm):	575 x 2450 x 1450
Platform (mm):	50 x 1340 x 1340 (2)
Weight (kg):	119
Capacity (ℓ):	1130
A / B (mm):	175 / 825
C / D (mm):	335 / 820
Max load (kg):	4000 (2000 per side)
IBC:	2



SJ-520-001 ● SJ-520-002 ●

H x W x D (mm):	575 x 2260 x 1465
Platform (mm):	90 x 1080 x 1365 (2)
Weight (kg):	116
Capacity (ℓ):	1200
W / X (mm):	180 / 710
Y / Z (mm):	1060 / 1480
Max load (kg):	3000 (1500 per side)
IBC:	2



SJ-520-095 ●

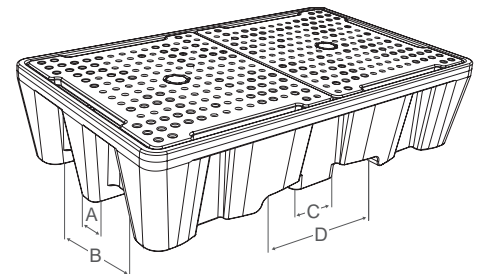
H x W x D (mm):	570 x 2165 x 1365
Platform (mm):	90 x 1080 x 1365 (2)
Weight (kg):	86
Capacity (ℓ):	N/A
W / X (mm):	130 / 765
Y / Z (mm):	1015 / 1640
Max load (kg):	3000 (1500 per side)
IBC:	2



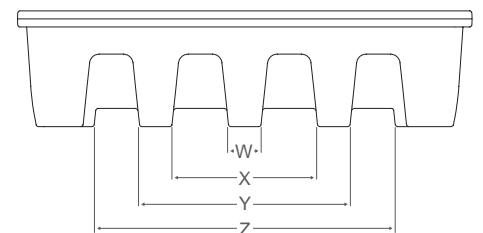
SJ-545-YE ● SJ-545-BLK ●

H x W x D (mm):	575 x 2300 x 1360
Platform (mm):	N/A
Weight (kg):	75
Capacity (ℓ):	1238
W / X (mm):	415 / 935
Y / Z (mm):	1320 / 1850
Max load (kg):	3000 (1500 per side)
IBC:	2

FORKLIFT ACCESS



FORKLIFT FRONT ACCESS ONLY



ON-BOARD SPILL CONTAINMENT

The **AWAYWASH** range offers on-board spill containment capacity of 45 and 55 litres for ready-mix concrete truck chute washout • Lighter than metal alternatives, sturdy and easy to maintain as concrete does not adhere to it • The unique design collects the washout waste and separates the coarse material in a robust sieve designed for easy emptying • No mechanical parts that could jam or require costly maintenance • Spare parts (sieve & hose) available.

PROTECTS THE ENVIRONMENT: Avoids washout water spillage on the ground • Prevents alkaline pollution and soiling at the delivery point • Removes harmful washout water from construction sites • Prevents contamination of underground and surface water • Allows the catching and re-using of washout water • Supports sustainable development policies • Facilitates compliance with environmental regulations.

ECONOMICAL: Separates aggregates from water for easily quantified recycling of solids^[1] • Reduces water consumption: allows batching plants to re-use the washout water • Reduces water treatment / disposal related costs.

FUNCTIONAL: Can be retrofitted • Time saving: no waiting at washout areas on work sites • Easy to install, handle and use.

PRODUCT FEATURES AS STANDARD: Tray with integrated sieve with incorporated handles acts as a water baffle during transit and prevents any water escaping • 750 mm flexible hose for easy emptying • Built-in fixing points (M8 x 15) offer various fitment options • Conspicuity tape applied.



CCRT-TS-YE

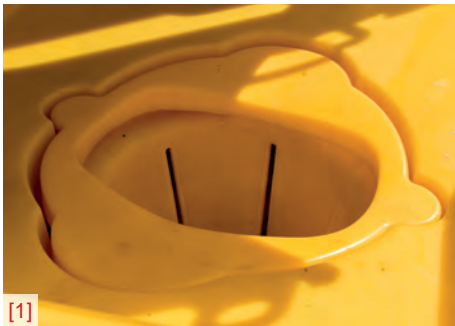


CCRT-TS-YE ●

CCRT2-TS-YE ● CCRT2-TS-BK ●

H x W x D (mm): 525 x 1860 x 760
 Weight (kg): 21.5
 Capacity (ℓ): 55
 Tray: ✓
 Sieve: ✓
 Hose: ✓

H x W x D (mm): 500 x 610 x 560
 Weight (kg): 11
 Capacity (ℓ): 45
 Tray: ✓
 Sieve: ✓
 Hose: ✓



[1]



[1]



[1]



CCRT2-TS-YE



CCRT-TS-YE



CCRT2-TS-YE



CCRT-TS-YE

SPILL CONTAINMENT ACCESSORIES

IBC DISPENSERS: When full overflows into IBC spill pallet • **SJ-500-007:** Must be used with base.

MODULAR RAMPS: Universal ramp & block modules for sump and spill storage units of different heights • Quick, easy and safe to handle by one person • Accommodates most trolley widths • Ergonomic slope angle of 11° • Integrated locking system for added safety • Strong and robust for industrial use • Slip resistant texture.

PVC CONNECTOR KIT: For Jonesco drum spill pallets & workfloors • 1 x $\frac{3}{4}$ " BSP straight connector • 4 x nitrile rubber (NBR) washers • 1 x $\frac{3}{4}$ " BSP nut • Unsuitable for IBC spill pallets • Not approved for use in all jurisdictions - check local regulations.

PVC DRAIN / TAP KIT: Compatible with various Jonesco spill containment products • 1 x tap valve with female $\frac{3}{4}$ " BSP • 1 x removable tap head • 2 x nitrile rubber (NBR) washers • 1 x $\frac{3}{4}$ " BSP straight connector • 1 x $\frac{3}{4}$ " BSP nut • Not approved for use in all jurisdictions - check local regulations.



IBC DISPENSERS



SJ-500-007 ●

H x W x D (mm): 1065 x 640 x 590
Weight (kg): 13
Capacity (ℓ): 100
Compatible with: SJ-500-001 / 002
 SJ-500-005 / 006



SJ-500-008 ●

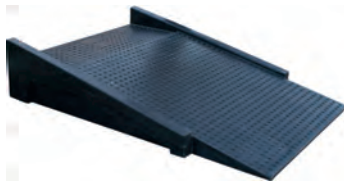
H x W x D (mm): 665 x 640 x 590
Weight (kg): 8
Capacity (ℓ): 100
Compatible with: SJ-500-003 / 004
 SJ-520-001 / 002
 SJ-545-YE / BLK



SJ-510-003 ●

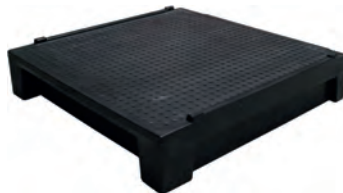
H x W x D (mm): 790 x 640 x 590
Weight (kg): 9
Capacity (ℓ): 100
Compatible with: SJ-510-001 / 002

MODULAR RAMPS



JR1 ●

H x W x D (mm): 150 x 750 x 1000
Weight (kg): 9
Max load (kg): 250

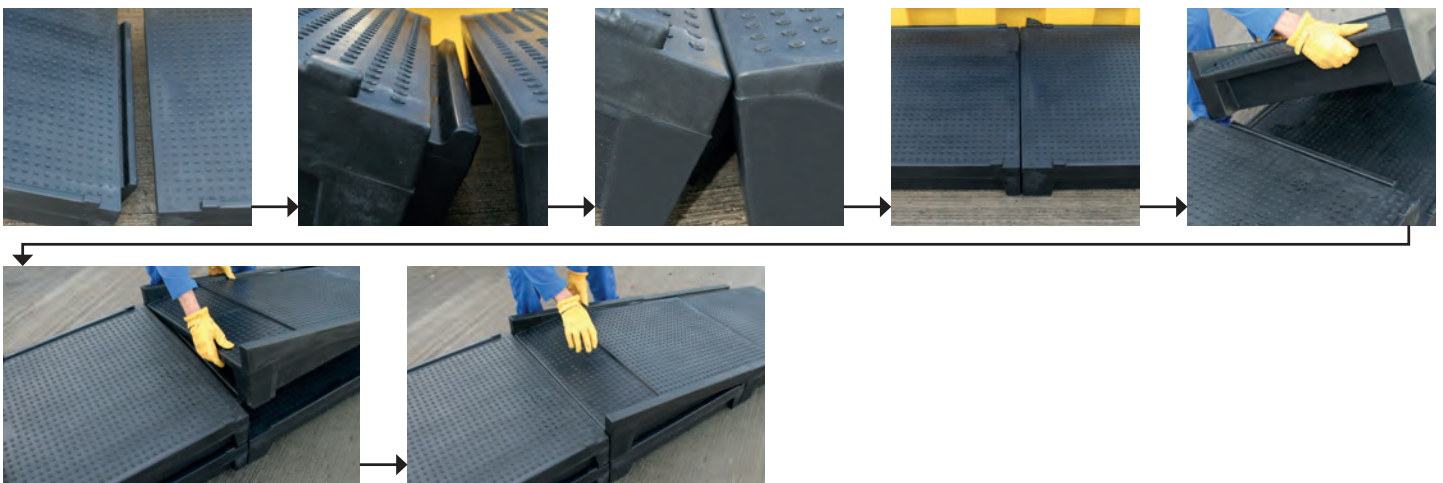


JRB1 ●

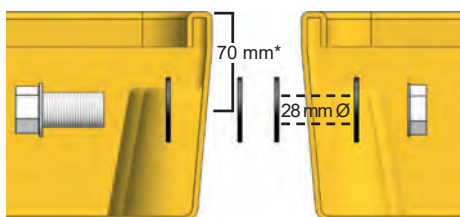
H x W x D (mm): 165 x 750 x 795
Weight (kg): 9
Max load (kg): 250

	UNITS REQUIRED			
	JR1	JRB1	H (mm)	W (mm)
SJ-300-001 / 002	1	-	150	1000
SJ-300-006 / 007				
SJ-100-060 / 061				
SJ-100-006 / 007	2	1	300	1750
SJ-110-006 / 007				
SJC4-YE-BK-B-F				
SJ-100-001 / 002				
SJ-100-010 / 011	3	3	450	2500
SJC2-YE-BK-B-A				
SJC45-YE-BK-B-F				

MODULAR RAMP STEP BY STEP



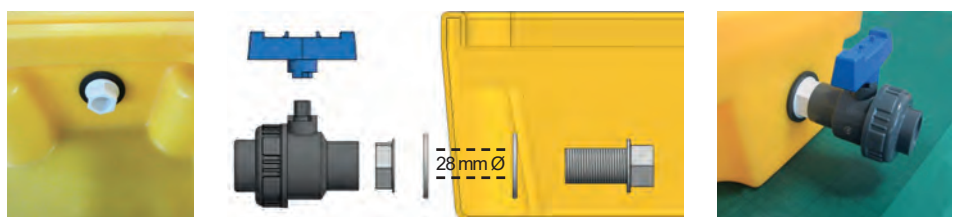
CONNECTOR KIT



JC6 ○

*Top of the bund to hole centre

DRAIN / TAP KIT



JC7 ●